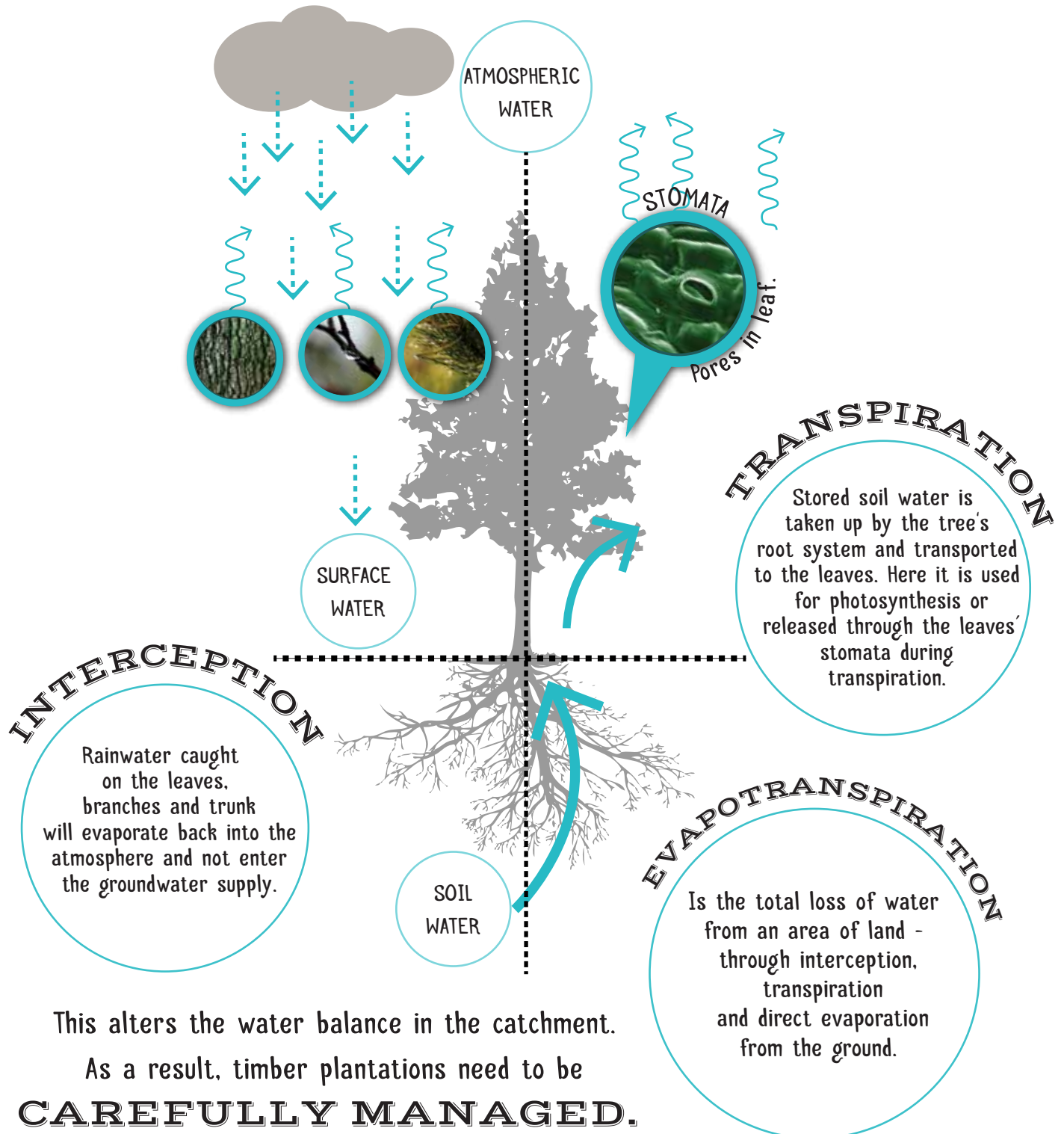


# WATER USE IN FORESTRY

## TIMBER PLANTATIONS ARE NOT IRRIGATED.

However, forestry does use around **3%** of the country's available water. The trees use soil water to produce energy through photosynthesis and release it through their leaves during transpiration. They also prevent a percentage of the rainwater reaching the ground, as a result of interception. This alters an area's water catchment. It is for this reason that the commercial forestry sector pays a stream flow reduction tax.



This alters the water balance in the catchment.

As a result, timber plantations need to be

**CAREFULLY MANAGED.**

