

FORESTRY AND CLIMATE CHANGE

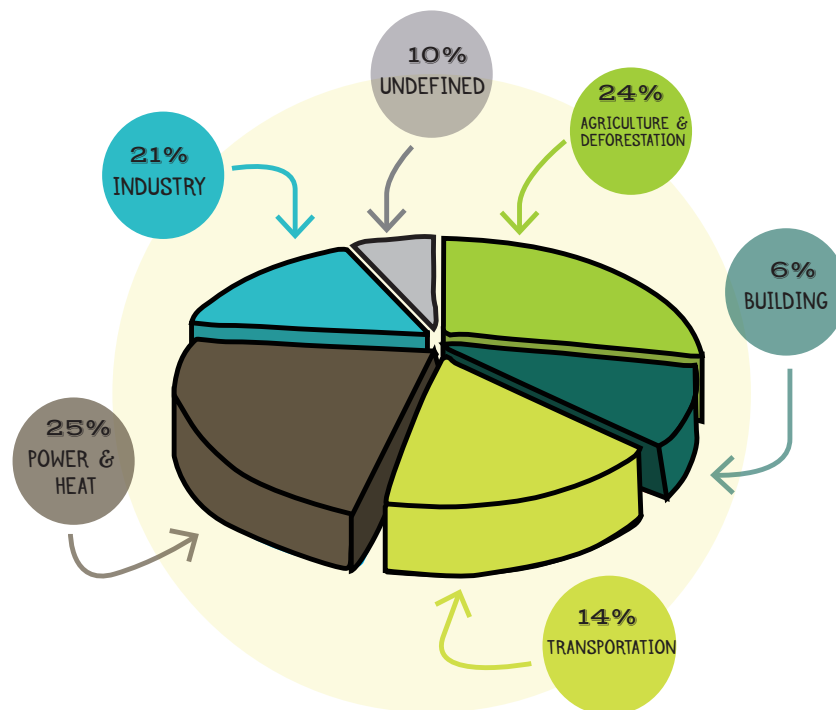
DEFORESTATION VS SUSTAINABLE TIMBER PLANTATION MANAGEMENT

While both involve cutting down trees, when it comes to climate change they couldn't be more different.

DEFORESTATION

Is the transformation of a forest into cleared land, when trees are cleared but not replanted. Deforestation is one of the biggest contributors to greenhouse gasses adding **1.6** gigatonnes of **CO₂** every year, making it a major driver of climate change.

Gigatonne = 1 billion tonnes



What is **CARBON NEUTRAL** ?

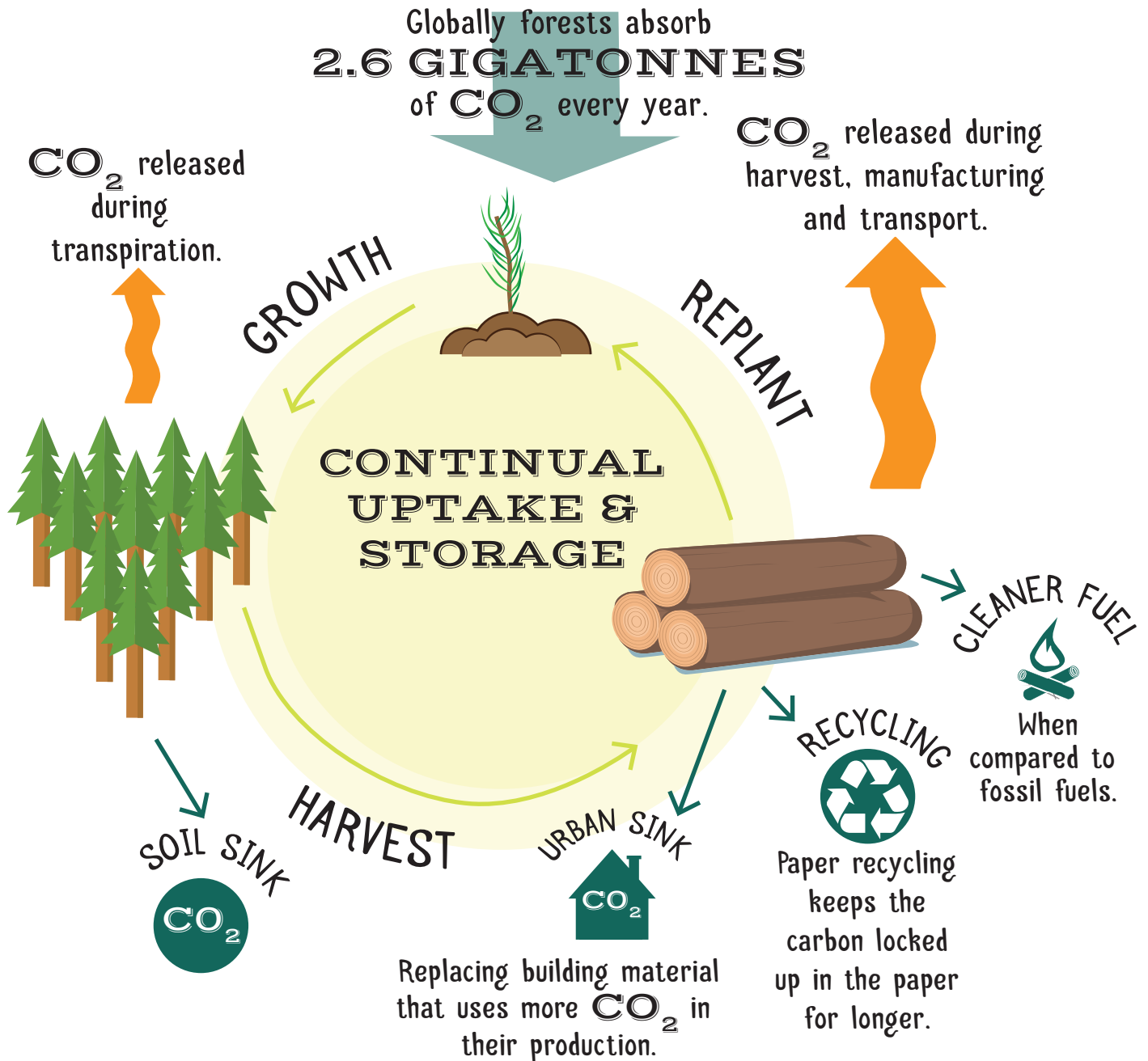


It is when the carbon released is equal or less than the carbon taken up.



SUSTAINABLE TIMBER PLANTATION MANAGEMENT

Sustainable timber plantation management ensures that rate of harvesting (felling) and planting are synchronised such that the area under timber remains the same.



Sustainable harvesting can help fight climate change by absorbing CO_2 from the atmosphere and storing it in a variety of carbon sinks. It also provides a renewable, carbon neutral alternative to fossil fuels.